



# *Splashbacks of Distinction*

Specialists in coloured and designer glass







It is now possible to create a wonderful feeling of depth, space and light in your home using large spans of coloured glass. The technique we use is backpainting where we apply a specially formulated paint to the back of the glass and you see the colour through the glass.

## the beauty of glass is **not always clear**

Modern and stylish look

Highly stain resistant

Very clean and hygienic

Makes any room look spacious and modern

Light reflective surface brightens any room

Extremely strong and durable

Can be shaped to fit any wall

Heat and impact resistant





add a touch of 'glass' to your kitchen...

Modern kitchen design incorporates high gloss finishes on both work surfaces and in kitchen cupboards and now this clean bright look can be added to walls with our back-painted glass. Our glass offers a modern, stylish and stunning alternative to tiles, stainless steel and granite with an easy to clean surface.





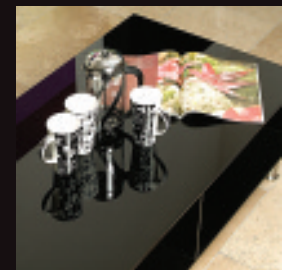
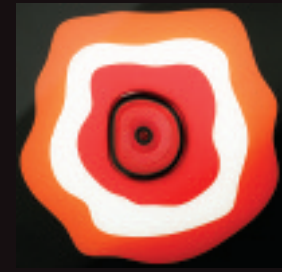




...or your bathroom, living areas...

Our glass products need not be limited to your kitchen. All areas of the home can benefit from modern, bright and hygienic glass.

Whether it be bathrooms or other wet areas or being used as a decorative design feature for modern living or work spaces glass offers a stunning, bright and luxurious solution.



# 24 standard colours

Although a myriad of colours are available with our unique paint system we offer a standard range of 24 colours which will suit most applications

Signal White | 9003



White | 9010



Light Ivory | 1015



Light Grey | 7035



Grey Beige | 1019



Azure Blue | 5009



Signal Blue | 5005



Pastel Violet | 4009



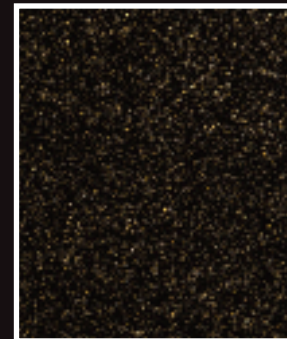
Red Lilac | 4001



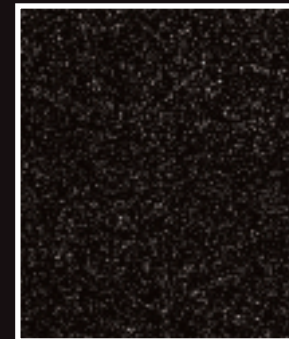
Heather Lilac | 4003

# quartz effect finishes

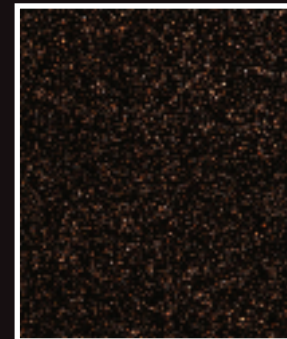
Our special Quartz effect gives an extra dimension to our painted glass and is ideal for glass worktops. The quartz effect gives a granite effect to the paint surface and is recommended to used with black or dark colours. The quartz effect is available in 3 stunning colours...Gold, Silver or Bronze.



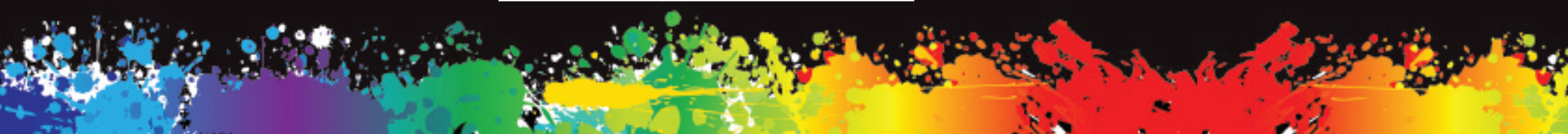
Gold Quartz



Silver Quartz

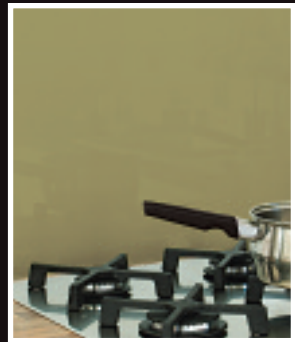


Bronze Quartz





Olive | 1020



Pastel Green | 6019



Pastel Turquoise | 6034



Yellow Green | 6018



Pastel Blue | 5024



Silver Grey | 7001



Pigeon Blue | 5014



Traffic Red | 3020



Bright Red Orange | 2008



Zinc Yellow | 1018



Copper



Gold



Silver



Black

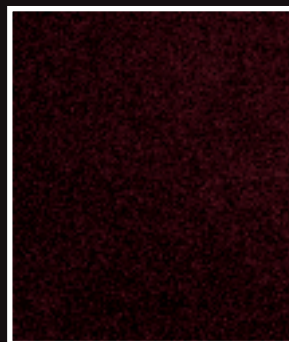
## flash effect finishes

Our flash effect gives a shimmer to the surface similar to a pearlescent effect.

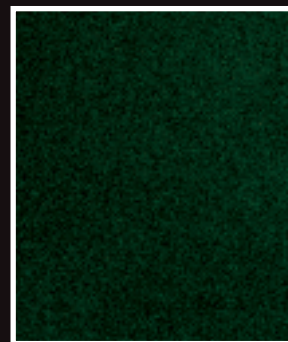
These effects are available in a range of colours, Red, Blue, Green and Vibrant Gold and are ideal when used with a black background.



Blue Flash



Red Flash



Green Flash

## custom colour service

With our custom colour service, it is possible to choose from over 1000 pantone colours and 215 Ral colours or we can match up to most paint manufacturers colours with our computerised matching system.



Due to the limitations in photographic and printing processes, actual colours may vary from those illustrated and should be used for guidance purposes only. Please refer to your RAL specifier for accuracy of colour.



Climbing Vine

## patterned designs

Using our colour system it is also possible to create striking designs in the glass. You can choose from our range of standard designs and change colours to suit your home or our designers can produce a unique design to match your wallpaper, existing tiling or a unique creation to express your style.

These multi colour designs are particularly popular as splashbacks behind cooker hobs and the colours used can be extended to surrounding wall cladding.

Moon Rays



Victoriana



Floral Wave



Driftwood



Rosebud



Serenade

Boggle

Retro Ellipse

# technical information

Colorspray is a technically advanced 2-part epoxy resin based paint designed specifically for the glass industry, with focus on excellent adhesion and UV stability, the system is ideally suitable for all applications where backpainting of glass is required such as Kitchens, Bathrooms, Spandrel and cladding.

### Glass Type

We recommend that 6mm glass be used in splashback applications and this should be toughened when being placed behind cookers or in close proximity to high heat. It is also recommended that all applications below a 1200mm threshold should be toughened.

Although Colorspray provides a very close commercial match to almost any paint colour this can vary when being viewed through the glass with varying shades of green hue due to high iron content in standard glass, this can be alleviated with the use of Low Iron alternatives such as Pilkington Opti White, Guardian UltraWhite, Saint Gobain Diamant, PPG Starfire or Glaverbel/AGC Clearvision. Other low iron content glass may also be available.

### Fixing

When fixing, we recommend the use of our Colorspray LMF Application Adhesive. Colorspray LMF has been specifically formulated for use with the Colorspray system to avoid colour fading and other problems that occur when using incorrect materials for the bonding of glass to substrates.



- > coloured glass splashbacks
- > glass worktops
- > glass balustrades
- > mirrors in a range of colours
- > toughened mirrors in a range of colours
- > glass table tops
- > glass wall panelling
- > printed glass splashbacks
- > bespoke shower enclosures and screens
- > glass vanity tops

*and much, much more...*



*Splashbacks of Distinction*

Specialists in coloured and designer glass

*Visit our Showroom*

Unit 11 | Broomhall Farm | Watton At Stone | Hertford | Hertfordshire | SG14 2RN

Telephone: 01920 830 084 | Email: [enquiries@splashbacksofdistinction.co.uk](mailto:enquiries@splashbacksofdistinction.co.uk)

[www.splashbacksofdistinction.co.uk](http://www.splashbacksofdistinction.co.uk)